



# MILWAUKEE VOLLEYBALL GAME NOTES

10 NCAA TOURNAMENTS | 14 CONFERENCE CHAMPIONSHIPS | 12 ALL-AMERICANS

MKEPanthers.com || @MKE\_Volleyball || Contact: Sean Engel || Email: engelsf@uwm.edu || Office/Cell: 414-435-8118

## 2023 SCHEDULE / RESULTS

Date	Opponent	TV	Time
<b>August</b>			
25	at Western Michigan		L, 1-3
26	vs. Northern Iowa		L, 0-3
26	vs. Villanova		L, 2-3
<b>September</b>			
1	vs. California Baptist		L, 1-3
1	vs. Montana State		W, 3-1
2	at St. Thomas (Minn.)		W, 3-0
4	<b>NORTHWESTERN</b>	ESPN+	W, 3-1
8	vs. Idaho		W, 3-0
8	vs. Western Illinois		W, 3-2
9	at SIUE	ESPN+	L, 1-3
12	<b>DEPAUL</b>		W, 3-0
14	<b>MARQUETTE</b>	ESPN+	L, 1-3
15	<b>AIR FORCE</b>	ESPN+	W, 3-2
19	at Chicago State	YouTube	W, 3-2
22	<b>IUPUI *</b>	ESPN+	W, 3-0
23	<b>PURDUE FORT WAYNE *</b>	ESPN+	W, 3-0
29	at Robert Morris *	ESPN+	W, 3-1
30	at Youngstown State *	ESPN+	W, 3-1
<b>October</b>			
3	<b>GREEN BAY *</b>	ESPN+	L, 1-3
6	<b>NORTHERN KENTUCKY *</b>	ESPN+	W, 3-1
7	<b>WRIGHT STATE *</b>	ESPN+	W, 3-1
13	at Oakland *	ESPN+	W, 3-0
14	at Cleveland State *		L, 0-3
20	at Purdue Fort Wayne *	ESPN+	W, 3-2
21	at IUPUI *		W, 3-1
27	<b>YOUNGSTOWN STATE *</b>	ESPN+	6:00 pm
28	<b>ROBERT MORRIS *</b>	ESPN+	4:00 pm
31	at Green Bay *	ESPN+	6:00 pm
<b>November</b>			
3	at Wright State *		5:00 pm
4	at Northern Kentucky *	ESPN+	2:00 pm
10	<b>CLEVELAND STATE *</b>	ESPN+	6:00 pm
11	<b>OAKLAND *</b>	ESPN+	4:00 pm
17	Horizon Quarterfinals		TBA
18	Horizon Semifinals		TBA
19	Horizon Championship		TBA

\*Horizon League Game | All times Central  
**HOME GAMES IN BOLD**

ESPN+ is offered at a price of \$9.99/month or \$99.99/year. Fans can sign-up or cancel at anytime.

It is also available as part of a bundle offer that gives subscribers access to Disney+, Hulu, and ESPN+ for \$13.99/month.

MATCH 24

## MILWAUKEE vs. YOUNGSTOWN STATE

October 27, 2023 | Klotsche Center | Milwaukee, Wisconsin | 6:00 pm



**PANTHERS**  
17-8, 9-2 Horizon



**PENGUINS**  
7-17, 2-11 Horizon



mkepanthers.com

MATCH 25

## MILWAUKEE at IUPUI

October 28, 2023 | Klotsche Center | Milwaukee, Wisconsin | 4:00 pm



**PANTHERS**  
17-8, 9-2 Horizon



**COLONIALS**  
6-18, 3-10 Horizon



mkepanthers.com

## QUICK NOTES

» Milwaukee enters this weekend's home set against Youngstown State and Robert Morris as winners of five of their last six including last weekend's wins over Purdue Fort Wayne and IUPUI.

» Milwaukee is looking for the season sweep of both opponents this week after 3-1 wins in Youngstown, Ohio and Moon Township, Pa. at the end of September.

» Milwaukee is 39-10 in all-time meetings against Youngstown State, including a 20-3 mark in home matches. The Panthers are also 6-0 in meetings with Robert Morris, which includes a 3-0 mark at home against the Colonials.

» With her appearance in the team's match on Friday against Youngstown State, Ari Miller will have appeared in more matches than any Panther in program history. She will break the tie with Kayla Price (2011-15), who also appeared in 127 career matches. Miller is also two sets shy of tying, and three sets from breaking the career sets played record, the all-time record is 471 set by Natalie Schmitting from 2007-10.

» Entering play this weekend, Madi Malone has 991 career kills as she looks to join the 1,000 kill club, which includes Ari Miller, who is currently at 1,469 career kills and is 31 shy from 1,500 kills. With 1,500 kills, she would become just the third player in program history to reach the milestone.

» MKE won the third set against Purdue Fort Wayne by a 33-31 score. It was the fourth time that the Panthers scored 30 points in a set dating back to the 2020 (spring 2021) season. In 2021 at Green Bay, the Panthers scored 30 points in a 32-30 first set loss (won match 3-1), they also scored a 30-28 win against UC Santa Barbara in the third set of a four-set loss. The last time the Panthers won a set and match with a 30+ point effort, came on March 15, 2021, when the Panthers beat Oakland 31-29 in the second set of a 3-0 win over the Golden Grizzlies.

» The Panthers are led by head coach Susie Johnson, who is in her 17th season as head coach and 27th overall with the program. Johnson became the program's all-time head coaching wins leader with her 272nd on September 19; later in the week she earned her 500th career win on the Panther sideline, which includes her time as both a head coach and an assistant coach. She earned her 300th career head coaching win on October 20, which includes her two seasons at Parkside.

## HEAD TO HEAD

CATEGORY	MILWAUKEE	YOUNGSTOWN STATE	ROBERT MORRIS
Kills (Team/Opp)	1,251/1,214	1,114/1,256	1,077/1,241
Errors (Team/Opp)	446/571	514/558	523/406
Attempts (Team/Opp)	3,296/3,441	3,358/3,532	3,336/3,268
Attacking Percent (Team/Opp)	.244/.187	.179/.198	.166/.256
Assists (Team/Opp)	1,163/1,152	1,048/1,165	971/1,139
Assists per Set (Team/Opp)	12.0/11.9	11.0/12.3	11.0/12.9
Service Aces (Team/Opp)	125/140	114/185	127/119
Digs (Team/Opp)	1,408/1,390	1,476/1,515	1,396/1,531
Total Blocks (Team/Opp)	229/192.5	205.5/199	112/212.5

**General Information**

Location	Milwaukee, Wis.
Founded	1885
Enrollment	24,836
Nickname	Panthers
Colors	Black and Gold
Field/Capacity	Klotsche Center/2,500
Affiliation	NCAA Division I
Conference	Horizon League
Chancellor	Mark Mone
Director of Athletics	Amanda Braun
Associate AD/SWA	Kathy Litzau
Ticket Office Phone	414-229-5886

**Team History**

First Year of Volleyball	1973
All-Time Record	1149-688-9
First Year in Division I	1990
NCAA Division I Record	582-435
NCAA Tournament Appearances	10
Last NCAA Appearance	2013
Last NCAA Opponent	Wisconsin
Result	L, 3-0

**2022 Team Information**

Overall Record	10-20
Home/Away/Neutral	6-4/3-10/1-6
Horizon Record	9-9
League Finish	5th/10
League Tournament Finish	Loss in Quarterfinals
Starters Returning/Lost	7/0
Letterwinners Returning/Lost	13/0

**Coaching Staff**

Head Coach	Susie Johnson
	Idaho State '93
Milwaukee Record	281-208
Office Phone	414-229-4483
Associate Head Coach	Lindsey Vanden Berg
	Milwaukee '03
Assistant Coach	Nikki Zimmerman
	Iowa '14
Assistant Coach	Will Hall
	UW-Stout '00
Athletic Trainer	Katie Wissing
	Saint Louis '21

**Media Relations**

Director of Ath. Comm./VB Contact	Sean Engel
Office/Cell Phone	414-435-8118
E-mail	engelsf@uwm.edu
Assistant AD Communications	Chris Zills
Athletic Communications Assistant	Seth Dittmer
Content Creation & Strategy	Rachel Klemp
Multimedia Services	Andrew Levesque
Athletics Website	www.mkepanthers.com

**2023 HORIZON LEAGUE STANDINGS**

Team	Horizon League			Overall			Strk
	W	L	Pct.	W	L	Pct.	
Milwaukee	9	2	.818	17	8	.680	W2
Northern Kentucky	9	3	.750	14	9	.609	W5
Wright State	9	3	.750	13	10	.565	W1
Cleveland State	8	4	.667	14	9	.609	W5
Oakland	8	4	.667	14	10	.583	W2
Green Bay	7	4	.636	9	14	.391	L1
Purdue Fort Wayne	3	9	.250	8	16	.333	L1
Robert Morris	3	10	.231	6	18	.250	L2
IUPUI	2	10	.167	8	15	.348	L5
Youngstown State	2	11	.154	7	17	.292	L6

**AROUND THE HORIZON LEAGUE**

<b>Oct. 17</b>	Northern Kentucky 3	Robert Morris 1
	Wright State 3	Youngstown State 0
<b>Oct. 20</b>	Cleveland State 3	Youngstown State 1
	Robert Morris 3	Oakland 1
	Green Bay 3	IUPUI 2
<b>Oct. 21</b>	Northern Kentucky 3	Wright State 2
	Cleveland State 3	Robert Morris 0
	Purdue Fort Wayne 3	Green Bay 0
	Oakland 3	Youngstown State 0
<b>Oct. 24</b>	Oakland 3	Purdue Fort Wayne 2
	Northern Kentucky 3	Youngstown State 2
	Cleveland State 3	IUPUI 0
	Wright State 3	Robert Morris 1
<b>Oct. 27</b>	Wright State at Cleveland State.....	5:00 pm
	Northern Kentucky at Oakland.....	5:00 pm
	Robert Morris at Green Bay.....	6:00 pm
<b>Oct. 28</b>	Northern Kentucky at Cleveland State.....	3:00 pm
	Purdue Fort Wayne at IUPUI.....	3:00 pm
	Wright State at Oakland.....	3:00 pm
	Youngstown State at Green Bay.....	4:00 pm
<b>Nov. 2</b>	IUPUI at Robert Morris.....	6:00 pm
<b>Nov. 3</b>	IUPUI at Youngstown State.....	5:00 pm
	Oakland at Cleveland State.....	5:00 pm
	Purdue Fort Wayne at Robert Morris.....	5:00 pm
	Green Bay at Northern Kentucky.....	5:00 pm
<b>Nov. 4</b>	Green Bay at Wright State.....	3:00 pm
	Purdue Fort Wayne at Youngstown State.....	3:00 pm

**HORIZON LEAGUE STATISTICAL LEADERS****Hitting Percent**

1. Ari Miller (MKE) .....	.375
2. Reilly Zegunis (WSU) .....	.359
3. Ainslie McLaughlin (CSU) .....	.337
4. Skyy Smith (NKU) .....	.319
5. Morgan Ostrowski (IUPUI) .....	.315

**Kills/Set**

1. Panna Ratkai (PFW) .....	4.46
2. Natalie Stepanovich (RMU) .....	3.36
3. Abby Kanarky (NKU) .....	3.25
4. Madi Malone (MKE) .....	3.24
5. Liberty Torres (CSU) .....	3.21

**Assists/Set**

1. Katie Meyer (WSU) .....	9.81
2. Emma Johnson (GB) .....	9.17
3. Karly Klaer (CSU) .....	9.13
4. Taya Haffner (PFW) .....	8.60
5. Grace Purichia (IUPUI) .....	8.42

**Service Aces/Set**

1. Hannah Vanden Berg (GB) .....	0.47
2. Ashleigh Wallin (RMU) .....	0.45
3. Andrea Bortulin (WSU) .....	0.44
4. Panna Ratkai (PFW) .....	0.43
5. Torie Housston (NKU) .....	0.39

**Blocks/Set**

1. Allie Siefke (NKU) .....	1.15
2. Ari Miller (MKE) .....	1.13
3. Skyy Smith (NKU) .....	1.10
4. Julia Sell (YSU) .....	1.10
5. JeriLynn Koehler (CSU) .....	1.07

**Digs/Set**

1. Emily Wichmann (OAK) .....	5.37
2. Jenny Wessling (WSU) .....	5.29
3. Emma Walker (CSU) .....	5.00
4. Anna Burke (NKU) .....	4.84
5. LonDynn Betts (PFW) .....	4.38

## GAME NOTES

**SCOUTING THE COMPETITION – YOUNGSTOWN STATE**

Entering the week with a 7-17 record and a 2-11 mark in Horizon League play, the Penguins fell to Northern Kentucky on Tuesday before heading to Wisconsin to take on Milwaukee (Friday) and Green Bay (Saturday). Earlier this season, the Panthers defeated Youngstown State by a 3-1 score in northeast Ohio as YSU won the third set of the match before the Panthers rebounded for the four-set win.

In the match on September 30, Milwaukee was led by Madi Malone with 12 kills, while Lakyn Graves had a career-high 11 in the effort, with Czen Beneby collecting nine. During the match, Milwaukee had a season-best nine service aces and will look to duplicate the effort on Friday. Youngstown State had three players with at least 10 kills including leader Jazmin Vergara with 15, Josi Borum had 22 assists, while Abbie Householder and Isidora Sisic led the team with nine digs apiece. Dayan Malave had assisted on six of the Penguins' eight blocks on the afternoon.

Householder leads YSU with 249 kills, while Vergara is right behind with 245 as the pair are the only two Penguins with more than 220 points on the season. YSU's two setter setup has Borum leading the way with 477 assists and Isabel Schaeftbauer with 438 on the season. Householder with 28 aces and Sisic with 25 aces lead the way, while Sisic is also the team's top defender with 339 digs. Julia Sell leads the Penguins up front with 100 blocks.

**SCOUTING THE COMPETITION – ROBERT MORRIS**

The Colonials of Robert Morris are 3-10 in Horizon League play with a 6-18 record overall on the season after falling to Wright State on Tuesday evening before the weekend trip to Wisconsin. Milwaukee will look for another positive result against the Colonials, after taking down RMU on September 29 at the UPMC Events Center in suburban Pittsburgh.

During their first meeting of the season Milwaukee took the opening set before dropping the second in a tight 27-25 stanza. The Panthers answered back with back-to-back set wins to take the match against the Colonials in four sets. Madi Malone led the Panthers with 19 kills, while both Ari Miller and Lakyn Graves had 10 kills apiece. Kaley Blake put together a strong showing with 28 helpers, while Miller had eight blocks, while Rachel Scott notched seven blocks up front for the Panthers. Sarah Schrader had the back line covered with 24 digs on the evening matchup.

As Natalie Stepanovich goes, so does Robert Morris as Stepanovich had 12 of RMU's 42 kills against the Panthers in late September. Stepanovich has 282 kills on the season, with Hillarie Adams second on the team with 186 on the season. Ashleigh Wallin has emerged as the team's primary setter with 482 assists, while Kaitlyn Brown has been serviceable in reserve with 208 assists. The pair of Wallin and Stepanovich also both have over 30 aces on the season, while the duo of Azra Eric and Emma Brown each have more than 40 blocks each. Allena Carmody leads the team with 384 digs.

**LAST TIME OUT**

In its most recent road trip, the Panthers returned to Milwaukee with a pair of wins as the team knocked off the Purdue Fort Wayne Mastodons in five sets, before connecting on a four-set win over IUPUI on Saturday afternoon. Madi Malone put together another strong weekend as she led the team with both 41 kills and 26 digs to help the team to the pair of wins.

On Friday, Milwaukee dropped the first two sets before winning a marathon third set by a 33-31 score. The Panthers flexed in the fourth and fifth sets with 25-12, and 15-11 wins to close out the victory. Milwaukee hit .222 on the match, but had turned things around in the latter three sets with 43 kills against just 12 errors, after committing as many errors in the opening two sets.

The Panthers dropped the opening set by a 25-18 score against IUPUI but rebounded with three consecutive set victories for sets two through four. The Panthers had a combined four errors in the final two sets, while connecting on 26 kills. During the match, Milwaukee hit .298 as Malone along with Ari Miller and Natalie Schmitz all had at least 11 kills in the win.

**IN THE NATION**

Out of 332 Division I programs, Milwaukee is currently second in the nation with 1,251 kills, second in the country with 1,163 assists, and fifth in the country with 229 blocks on the season. Milwaukee also holds a spot in the top-10 with 3,296 total attacking attempts heading into this weekend's action.

Individually, Ari Miller is 22nd in the nation with 374 points, while Madi Malone is 51st in the same category with 345.5 points. Miller is also top-10 in the nation with 110 blocks, while she is 51st in the country with a .375 hitting percentage.

**MILLER'S TOP-10 ASCENT**

With 289 kills this season, Ari Miller now has 1,469 for her career with Milwaukee, that total now places her third on the all-time Division I kills list in program history. Next on the list is Laura Dallenbach in second place all-time as Dallenbach finished her career with 1,534 career kills.

In addition to her kills mark, Miller now has a career-best 110 blocks in her final collegiate season to give her 426 career blocks. She is currently in third on the all-time blocks list and 48 more to reach the top-two on the all-time blocks list.

Miller also moved into the top-10 all time in both matches played and sets played, Miller has now seen time in 127 career matches (t-1st) and 469 sets played (2nd).

**HORIZON LEAGUE HONORS**

Milwaukee has had a league-leading six selections for Horizon League Player of the Week as Madi Malone earned her third selection this Monday. In addition to Malone's three selections, Ari Miller has earned the weekly nod from the conference on three occasions in the month of September.

Malone and Miller are two of just three Horizon League student-athletes to earn multiple Player of the Week nods this season. Panna Ratkai of Purdue Fort Wayne has four selections, while PFW has had five selections as a team.

**PICKING UP THE PACE IN HORIZON LEAGUE PLAY**

In 11 conference matches this season, Madi Malone has stepped it up with a team-best 156 kills, good enough for 3.80 kills per set and is hitting .292 on the year with a team-best 397 attacking attempts. Malone is tied for second on the team with 11 service aces and is third on the team with 101 digs during that span.

In 25 matches overall on the season, Malone has 3.24 kills per set with a team-best 314 kills on a team-high 873 attempts. Malone only had two service aces in non-conference play, finishing non-league play with 131 digs.

**BLOCK PARTY**

Following 179 blocks in 2019, the Panthers have increased their team's total block total every season, with 180 in 2021, and 211 in 2022. Through 25 matches Milwaukee has 229 blocks and are on a strong pace to continue their upward trend in 2023.

The Panthers are tops in the Horizon League with their team block total at 229 and are also second in the league in solo blocks with 51 thus far. Ari Miller is third in the league with 16 solo blocks, while Lakyn Graves is fourth with 14 on the season. Czen Beneby is also in the top-10 with 11 solo blocks.

With 110 total blocks on the season individually, Ari Miller is currently 10th in all of NCAA Division I and is just 19 blocks off the national lead.

**DOUBLE-QUARTER**

Twice this season setters Kaley Blake and Josie Johnson have recorded at least 25 assists each in the span of one contest. Against Villanova early in the season, Johnson and 30 and Blake had 26 in the five-setter against the Wildcats. Against Air Force on September 15, Johnson had 29 and Blake registered 25. The duo has now accomplished the feat on three occasions in their career, with their first instance coming on October 18 of the 2022 season, when Johnson had 26 and Blake had 29 against IUPUI.

The last time two setters had more than 30 assists in a single match came back on August 29, 2021, when Blake had 32 assists and former teammate Rylie Vaughn had 31 in the team's five-set match against Valparaiso at the Klotsche Center.

**CAN YOU DIG IT?**

In her final season with the team, Sarah Schrader has played a vital role in the team's defensive efforts in the back row this year with a team-best 316 digs, which is already the second highest dig total for her career. In 2022, Schrader had a career-best 324 digs and is well ahead of that pace as she is averaging 3.85 digs per set compared to last year's 3.31 dig per set as a junior.

With her 36 digs against Western Illinois on September 8, Schrader moved into a third-place tie on the single-match digs list in five-set matches, equaling the mark of Myanna Ruiz in September of 2015. The single match-record for the Panthers is 41 digs set by Becky Peters in 2005, while Lauren Felsing is the only other player to reach 40 digs in a match as she did so in 2009 with 40 digs in a four-set match.

**NO SOPHOMORE SLUMP HERE**

Following strong freshman campaigns in 2022 Natalie Schmitz and Josie Johnson both reached new career-high marks at their respective positions during the opening trio of matches in Michigan.

Schmitz has secured a career-best 17 kills in three matches this season, including the team's matches against Villanova, Montana State, and Northwestern. Johnson also reached a career-high mark in the match against the Bobcats of Montana State with 31 assists.

**COACHING MILESTONES**

Milwaukee head coach Susie Johnson earned her 272nd head coaching victory at Milwaukee to become the program's all-time leader in wins as a Division I program (since 1990). Johnson earned the win with a five-set victory over the Chicago State Cougars on Tuesday evening and is now the department's leader in wins for any women's sport at Milwaukee.

In addition to her head coaching wins total with the Panthers, Johnson also recorded her 500th career win with the Panthers program on Saturday against Purdue Fort Wayne. Johnson has 274 wins as head coach, coupled with 226 wins during her 10 seasons as an assistant coach with the program.

On October 20, Johnson earned her 300th career victory, which includes her 280 at Milwaukee and 20 during her first two collegiate seasons as a head coach at Parkside.

**1,000 DIVISION I MATCHES**

Earlier this season, the Milwaukee volleyball program played its 1,000th Division I match in its 34th season of competition. The Panthers won the match in five sets over Western Illinois at the SIUE Cougar Classic. The program's first-ever match took place on August 31, 1990, against Wright State in Macomb, Illinois at a tournament hosted by Western Illinois.

**LOOKING AHEAD**

After this weekend, Milwaukee heads back on the road for the final week of road action beginning with a matchup with in-state foe Green Bay on October 31 at 6 p.m. The Panthers will then visit Wright State on November 3, before traveling to Northern Kentucky on November 4.

## MILWAUKEE VOLLEYBALL ROSTER

No.	Name	Pos.	Ht.	Yr.	Hometown (High School/College)
1	Tatum Catalano	OH/RS	6-0	Jr.	Germantown, Wis. (Germantown)
2	Bri Geurts	RS/MB	6-0	Jr.	De Pere, Wis. (De Pere)
3	Lakyn Graves	MB	6-2	Jr.	Menomonee Falls, Wis. (Sussex Hamilton/Omaha)
4	Josie Johnson	S	5-7	So.	Burlington, Wis. (Waterford Union)
6	Ari Miller	MB	5-11	Gr.	Jackson, Wis. (Kettle Moraine Lutheran)
8	Kaley Blake	S	5-7	Sr.	Burlington, Wis. (Burlington)
9	Kati Goba	DS	5-4	Fr.	Mukwonago, Wis. (Wisconsin Lutheran)
10	Czhen Beneby	MB	6-3	So.	West Palm Beach, Fla. (Alexander W. Dreyfoos/Virginia)
11	Natalie Schmitz	OH	6-1	So.	Ham Lake, Minn. (Blaine)
12	Bella Lipski	MB	6-2	Fr.	Milwaukee, Wis. (Divine Savior Holy Angels)
13	Kara Erdmann	DS	5-6	So.	Forrester, Ill. (Forrester)
14	Madi Malone	OH	6-0	Jr.	Newark, Ill. (Newark)
15	Sarah Schrader	OH	5-8	Sr.	Sussex, Wis. (Sussex Hamilton)
16	Rachel Scott	RS	6-2	So.	Belvidere, Ill. (Belvidere North)
17	Mati Jakscht	DS	5-6	Gr.	East Troy, Wis. (East Troy)



**Tatum  
Catalano**



**Bri  
Geurts**



**Lakyn  
Graves**



**Josie  
Johnson**



**Ari  
Miller**



**Kaley  
Blake**



**Kati  
Goba**



**Czhen  
Beneby**



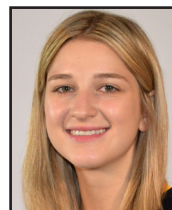
**Natalie  
Schmitz**



**Bella  
Lipski**



**Kara  
Erdmann**



**Madi  
Malone**



**Sarah  
Schrader**



**Rachel  
Scott**



**Mati  
Jakscht**

## COACHING STAFF

**Head Coach:** Susie Johnson (17th season)

**Associate Head Coach:** Lindsey Vanden Berg (17th season)

**Assistant Coach:** Nikki Zimmerman (third season)

**Assistant Coach:** Will Hall (first season)

## ROSTER BY STATE

**Wisconsin:** Kaley Blake, Tatum Catalano, Bri Geurts, Kati Goba, Lakyn Graves, Mati Jakscht, Josie Johnson, Bella Lipski, Ari Miller, Sarah Schrader

**Florida:** Czhen Beneby

**Illinois:** Kara Erdmann, Madi Malone, Rachel Scott

**Minnesota:** Natalie Schmitz

## PRONUNCIATION GUIDE

<b>Czhen Beneby</b>	ZEN BEN-uh-bee
<b>Tatum Catalano</b>	TAY-tum cat-uh-LAH-no
<b>Bri Geurts</b>	GERTS
<b>Lakyn Graves</b>	LAY-kin
<b>Mati Jakscht</b>	YOTCH

## ROSTER BY CLASS

**Graduate Students:** Ari Miller, Mati Jakscht

**Seniors:** Kaley Blake, Sarah Schrader

**Juniors:** Tatum Catalano, Bri Geurts, Lakyn Graves, Madi Malone

**Sophomore:** Czhen Beneby, Kara Erdmann, Josie Johnson, Natalie Schmitz, Rachel Scott

**Freshman:** Kati Goba, Bella Lipski





# SUSIE JOHNSON

HEAD COACH

17TH SEASON

281-208 (.575) AT MILWAUKEE

**Susie Johnson** enters her 27th overall season with the Milwaukee volleyball program, including the last 16 seasons as head coach as she enters the 2023 season.

Johnson was named head coach in May of 2007 after 10 years as an assistant and associate head coach at Milwaukee. Since taking over the reins, Johnson has led Milwaukee to 264 wins, six regular-season titles, four league-tournament crowns, and four NCAA Tournament berths.

In her 26 total seasons at Milwaukee, the Panthers have compiled a 490-270 record. That number includes a 286-98 mark in league play and a 240-70 record at the Klotsche Center. The Panthers have also won 159 of their 190 league matches at home with Johnson on the bench.

With half of the roster new to the Milwaukee program in 2022, the Panthers mustered 10 wins while battling through a challenging non-conference slate that included five teams that were ranked by the AVCA, including No. 11 Purdue, who was the highest ranked opponent for a Panther squad since December of 2013. Three Panthers earned postseason honors from the Horizon League as Ari Miller was a first-team honoree, Madi Malone was a second teamer, and Natalie Schmitz was a member of the All-Freshman Team. Miller went on to become a member of the Horizon All-Academic Team as well as the College Sports Communicators Academic All-District team, becoming the first Panther to receive multiple selections by CSC/CoSIDA.

Her overall run has included the first undefeated Horizon League season in 17 years, a school-record 18-match winning streak and the program's best-ever NCAA Tournament performance - a heartbreaking five-set loss to Dayton in 2009.

In 2011, the Panthers went 25-5 overall and 16-0 in league play,

becoming the first Horizon League team to go through the league schedule without a loss since Notre Dame did it in 1994. Milwaukee also set a school record with 18 straight wins and nearly upset Iowa State in the first round of the postseason.

Johnson's efforts on the recruiting trail have led to nine league newcomers of the year during her tenure, including Malone in 2022, Bridget Wallenberger in 2016, and Rachel Neuberger in 2009. Plus, 24 Panther players have earned a spot on the league's all-newcomer team in the last 24 years. Panther players have then consistently developed into the best players in the Horizon League. In her 25 seasons in Milwaukee, Johnson has coached 11 League Players of the Year, with Kerri Schuh winning the award twice and Neuberger claiming the distinction in 2013.

In all, players have earned all-league honors 66 times under Johnson and the recognition for Panther players has extended far beyond the Horizon League. With Johnson's assistance, MKE players have earned AVCA All-America honors ten times and AVCA All-Region honors 22 times. Plus, three Panthers have earned AVCA Region Freshman of the Year accolades, including Neuberger and Kayla Price.

Johnson's playing background is at setter, where she earned All-Big Sky and All-Northwest Region honors at Idaho State. She was also a two-time Academic All-Big Sky honoree and has helped direct the Panthers to great success in the classroom, with two Academic All-Americans and a team GPA above 3.3.

A native of Racine, Johnson joined the Panther staff after serving as an assistant coach at Indiana State. She also worked at Idaho State and was head coach at UW-Parkside. She lives in Racine with her husband, C.J., son Ty, daughter Josie and stepson Brody.

## Panthers 2023 Record When ...

At Home .....	7-2
On the Road .....	7-3
At a Neutral Site .....	3-3

In Three-Set Matches .....	6-2
In Four-Set Matches .....	7-5
In Five-Set Matches .....	4-1

Winning the First Set .....	12-2
Leading After Two Sets .....	7-0
Trailing After Two Sets .....	2-3
Tied After Two Sets .....	8-5

On Weekdays .....	9-4
On Weekends .....	2-4
On Mondays .....	1-0
On Tuesdays .....	2-1
On Wednesdays .....	0-0
On Thursdays .....	0-1
On Fridays .....	9-2
On Saturdays .....	5-4
On Sundays .....	0-0
In August .....	0-3
In September .....	12-3
In October .....	5-2
In November .....	0-0
vs. Horizon .....	9-2

## 2023 HORIZON LEAGUE PRESEASON POLL

School (1st place votes)	Points
1. Wright State (9)	99
2. Northern Kentucky (1)	85
3. Green Bay	76
4. Milwaukee	73
5. Cleveland State	66
6. Oakland	47
7. Purdue Fort Wayne	35
8. Youngstown State	33
T9. IUPUI	18
T9. Robert Morris	18

## IT'S "MILWAUKEE"

A lot has been made of the correct way to talk about the University of Wisconsin-Milwaukee, especially in the area of athletics. It would be appreciated if you would refer to the athletics teams as either "Milwaukee" or "MKE". Your cooperation in this matter is greatly appreciated.

Milwaukee Athletics is making an effort to brand itself as "Milwaukee" instead of other references. Please avoid UW-Milwaukee, UW-M, Wisc.-Mil, UW-MIL, Wisconsin-Milwaukee, etc. We appreciate your assistance with this effort in advance.



## 2023 OVERALL STATISTICS

			Attack					Set		Serve				Dig		Blocking						
##	Player	SP	K	K/S	E	TA	PCT	A	A/S	SA	SE	SA/S	RE	DIG	DIG/S	BS	BA	TOT/S	BLK/S	BE	BHE	PTS
2	Geurts, Bri	76	107	1.41	46	283	.216	4	0.05	0	0	0.00	0	18	0.24	3	29	32	0.42	3	0	124.5
3	Graves, Lakyn	97	94	0.97	38	238	.235	3	0.03	3	9	0.03	0	24	0.25	14	82	96	0.99	4	2	152.0
4	Johnson, Josie	97	15	0.15	3	50	.240	502	5.18	20	25	0.21	0	170	1.75	0	0	0	0.00	0	8	35.0
6	Miller, Ari	97	289	2.98	60	610	.375	10	0.10	22	39	0.23	1	77	0.79	16	94	110	1.13	11	2	374.0
8	Blake, Kaley	97	5	0.05	0	29	.172	500	5.15	21	14	0.22	0	200	2.06	0	0	0	0.00	0	5	26.0
9	Goba, Kati	25	0	0.00	0	0	.000	8	0.32	1	7	0.04	5	40	1.60	0	1	1	0.04	0	0	1.5
10	Beneby, Czhen	83	132	1.59	71	300	.203	1	0.01	0	0	0.00	0	24	0.29	11	44	55	0.66	8	3	165.0
11	Schmitz, Natalie	97	253	2.61	111	778	.183	5	0.05	17	15	0.18	17	78	0.80	3	38	41	0.42	8	0	292.0
12	Lipski, Bella	7	4	0.57	3	8	.125	0	0.00	0	0	0.00	0	2	0.29	0	7	7	1.00	1	0	7.5
13	Erdmann, Kara	76	0	0.00	1	3	-.333	31	0.41	2	3	0.03	14	168	2.21	0	0	0	0.00	0	2	2.0
14	Malone, Madi	97	314	3.24	101	873	.244	19	0.20	13	16	0.13	47	232	2.39	3	31	34	0.35	2	1	345.5
15	Schrader, Sarah	91	1	0.01	2	15	-.067	72	0.79	24	17	0.26	37	330	3.63	0	0	0	0.00	1	1	25.0
16	Scott, Rachel	48	36	0.75	10	106	.245	5	0.10	0	0	0.00	0	22	0.46	1	30	31	0.65	7	0	52.0
17	Jakscht, Mati	12	1	0.08	0	3	.333	3	0.25	2	1	0.17	5	23	1.92	0	0	0	0.00	0	2	3.0
MILWAUKEE		97	1251	12.90	446	3296	.244	1163	11.99	125	146	1.29	140	1408	14.52	51	356	229	2.36	45	26	1,605.0
Opponents		97	1215	12.53	571	3441	.187	1152	11.88	140	173	1.44	125	1390	14.33	25	335	192.5	1.98	28	18	1,547.5

## 2023 HORIZON LEAGUE STATISTICS

##	Player	SP		Attack					Set				Serve				
		MP	MS	K	K/S	E	TA	PCT	A	A/S	TA	PCT	SA	SA/S	SE	TA	PCT
2	Geurts, Bri	28	8-2	14	0.50	16	70	-.029	0	0.00	8	.000	0	0.00	0	2	1.000
3	Graves, Lakyn	41	11-11	63	1.54	24	139	.281	3	0.07	12	.250	0	0.00	2	2	.000
4	Johnson, Josie	41	11-9	6	0.15	3	25	.120	181	4.41	540	.335	11	0.27	11	149	.926
6	Miller, Ari	41	11-11	110	2.68	24	238	.361	4	0.10	14	.286	10	0.24	16	130	.877
8	Blake, Kaley	41	11-2	4	0.10	0	13	.308	235	5.73	523	.449	12	0.29	6	160	.963
9	Goba, Kati	7	3-1	0	0.00	0	0	.000	4	0.57	16	.250	1	0.14	2	25	.920
10	Beneby, Czhen	35	10-9	59	1.69	28	126	.246	0	0.00	12	.000	0	0.00	0	0	.000
11	Schmitz, Natalie	41	11-6	101	2.46	43	305	.190	1	0.02	14	.071	7	0.17	7	77	.909
12	Lipski, Bella	7	2-0	4	0.57	3	8	.125	0	0.00	0	.000	0	0.00	0	0	.000
13	Erdmann, Kara	34	11-1	0	0.00	0	2	.000	15	0.44	66	.227	1	0.03	2	68	.971
14	Malone, Madi	41	11-11	156	3.80	40	397	.292	6	0.15	34	.176	11	0.27	4	165	.976
15	Schrader, Sarah	41	11-3	0	0.00	2	7	-.286	49	1.20	124	.395	11	0.27	9	170	.947
16	Scott, Rachel	18	6-0	21	1.17	5	50	.320	1	0.06	5	.200	0	0.00	0	0	.000
17	Jakscht, Mati	2	1-0	0	0.00	0	1	.000	0	0.00	3	.000	0	0.00	0	0	.000
<b>MILWAUKEE</b>		<b>41</b>	<b>11-11</b>	<b>538</b>	<b>13.12</b>	<b>188</b>	<b>1381</b>	<b>.253</b>	<b>499</b>	<b>12.17</b>	<b>1371</b>	<b>.364</b>	<b>64</b>	<b>1.56</b>	<b>59</b>	<b>948</b>	<b>.938</b>
<b>Opponents</b>		<b>41</b>	<b>11-11</b>	<b>491</b>	<b>11.98</b>	<b>258</b>	<b>1469</b>	<b>.159</b>	<b>463</b>	<b>11.29</b>	<b>1467</b>	<b>.316</b>	<b>53</b>	<b>1.29</b>	<b>79</b>	<b>819</b>	<b>.904</b>

## 2023 SEASON BESTS

## KILLS

Team: **71** vs. Western Illinois (Sept. 8)  
 Individual: **26** (Madi Malone) at Purdue Fort Wayne (Oct. 20)  
 Opponent: **70** vs. Villanova (Aug. 26)

## ATTACK PERCENTAGE (min. 10 kills)

Team: **.459** vs. Idaho (Sept. 8)  
 Individual: **.650** (Ari Miller) vs. Purdue Fort Wayne (Sept. 23)  
 Opponent: **.347** at Cleveland State (Oct. 14)

## ASSISTS

Team: **66** vs. Western Illinois (Sept. 8)  
 Individual: **32** (Kaley Blake & Josie Johnson) (Once Each)  
 Opponent: **67** vs. Villanova (Aug. 26)

## ACES

Team: **9** (Twice)  
 Individual: **3** (Five Players, Seven Occurances)  
 Opponent: **13** vs. Montana State (Sept. 1)

## DIGS

Team: **93** vs. Western Illinois (Sept. 8)  
 Individual: **36** (Sarah Schrader) vs. Western Illinois (Sept. 8)  
 Opponent: **83** vs. Western Illinois (Sept. 8)

## TOTAL BLOCKS

Team: **14** (Three Times)  
 Individual: **8** (Ari Miller; Three Times)  
 Opponent: **12.5** vs. Northwestern (Sept. 4)

## 2023 SCHEDULE AND RESULTS

Date	Opponent	Score	Set-by-set	Overall	Horizon	Time	Att.
<i>WESTERN MICHIGAN TOURNAMENT</i>							
Aug. 25	at Western Michigan	L, 1-3	15-25, 25-21, 20-25, 12-25	0-1		1:46	251
Aug. 26	vs. Northern Iowa	L, 0-3	22-25, 23-25, 20-25	0-2		1:24	117
Aug. 26	vs. Villanova	L, 2-3	22-25, 25-22, 23-25, 25-18, 15-17	0-3		2:23	153
<i>ST. THOMAS TOURNAMENT</i>							
Sept. 1	vs. California Baptist	L, 1-3	25-23, 13-25, 22-25, 19-25	0-4		2:01	153
Sept. 1	vs. Montana State	W, 3-1	26-24, 22-25, 25-16, 25-22	1-4		1:58	214
Sept. 2	at St. Thomas (Minn.)	W, 3-0	25-19, 25-14, 25-18	2-4		1:18	406
<b>Sept. 9</b>	<b>NORTHWESTERN</b>	<b>W, 3-1</b>	<b>25-23, 14-25, 25-22, 25-23</b>	<b>3-4</b>		<b>2:04</b>	<b>637</b>
<i>SIUE TOURNAMENT</i>							
Sept. 8	vs. Idaho	W, 3-0	25-13, 25-16, 25-14	4-4		1:14	102
Sept. 8	vs. Western Illinois	W, 3-2	22-25, 25-18, 25-18, 25-27, 15-10	5-4		2:27	104
Sept. 9	at SIU-Edwardsville	L, 1-3	23-25, 25-16, 19-25, 18-25	5-5		1:50	n/a
<b>Sept. 12</b>	<b>DEPAUL</b>	<b>W, 3-0</b>	<b>25-15, 25-20, 25-22</b>	<b>6-5</b>		<b>1:18</b>	<b>313</b>
<b>Sept. 14</b>	<b>MARQUETTE</b>	<b>L, 1-3</b>	<b>14-25, 18-25, 25-17, 17-25</b>	<b>6-6</b>		<b>1:51</b>	<b>653</b>
<b>Sept. 15</b>	<b>AIR FORCE</b>	<b>W, 3-2</b>	<b>22-25, 20-25, 25-18, 25-20, 15-13</b>	<b>7-6</b>		<b>2:18</b>	<b>368</b>
Sept. 19	at Chicago State	W, 3-2	25-23, 16-25, 25-19, 16-25, 15-11	8-6		2:09	n/a
<b>Sept. 22</b>	<b>IUPUI *</b>	<b>W, 3-0</b>	<b>25-18, 25-17, 25-11</b>	<b>9-6</b>	<b>1-0</b>	<b>1:12</b>	<b>285</b>
<b>Sept. 23</b>	<b>PURDUE FORT WAYNE *</b>	<b>W, 3-0</b>	<b>25-18, 25-9, 25-19</b>	<b>10-6</b>	<b>2-0</b>	<b>1:10</b>	<b>283</b>
Sept. 29	at Robert Morris *	W, 3-1	25-15, 25-27, 25-13, 25-17	11-6	3-0	1:53	142
Sept. 30	at Youngstown State *	W, 3-1	25-20, 25-17, 21-25, 25-20	12-6	4-0	1:57	184
<b>Oct. 3</b>	<b>GREEN BAY *</b>	<b>L, 1-3</b>	<b>25-21, 16-25, 19-25, 17-26</b>	<b>12-7</b>	<b>4-1</b>	<b>1:47</b>	<b>485</b>
<b>Oct. 6</b>	<b>NORTHERN KENTUCKY *</b>	<b>W, 3-1</b>	<b>23-25, 25-16, 25-20, 26-24</b>	<b>13-7</b>	<b>5-1</b>	<b>2:01</b>	<b>431</b>
<b>Oct. 7</b>	<b>WRIGHT STATE *</b>	<b>W, 3-1</b>	<b>25-21, 15-25, 25-16, 25-22</b>	<b>14-7</b>	<b>6-1</b>	<b>1:52</b>	<b>381</b>
Oct. 13	at Oakland *	W, 3-0	25-18, 25-12, 25-9	15-7	7-1	1:19	293
Oct. 14	at Cleveland State *	L, 0-3	20-25, 22-25, 24-26	15-8	7-2	1:21	228
Oct. 20	at Purdue Fort Wayne *	W, 3-2	21-25, 17-25, 33-31, 25-2, 15-11	16-8	8-2	2:22	362
Oct. 21	at IUPUI *	W, 3-1	18-25, 25-17, 25-17, 25-21	17-8	9-2	1:40	215
<b>Oct. 27</b>	<b>YOUNGSTOWN STATE *</b>					<b>6:00 pm</b>	
<b>Oct. 28</b>	<b>ROBERT MORRIS *</b>					<b>4:00 pm</b>	
Oct. 31	at Green Bay *					6:00 pm	
Nov. 3	at Wright State *					5:00 pm	
Nov. 4	at Northern Kentucky *					2:00 pm	
<b>Nov. 10</b>	<b>CLEVELAND STATE *</b>					<b>6:00 pm</b>	
<b>Nov. 11</b>	<b>OAKLAND *</b>					<b>4:00 pm</b>	
Nov. 17	Horizon League Quarterfinals ^					TBA	
Nov. 18	Horizon League Semifinals ^					TBA	
Nov. 19	Horizon League Championship ^					TBA	

Home Games in **BOLD** | \* Horizon League Match | ^ Horizon League Tournament

## SEASON &amp; CAREER HIGHS

**1 Tatum Catalano | Jr. | OH/RS****2023 Season Highs**

Kills ..... n/a  
 Attempts ..... n/a  
 Hitting % ..... n/a  
 Blocks ..... n/a  
 Digs ..... n/a  
 Aces ..... n/a  
 Assists ..... n/a

**Career Highs**

Kills ..... 4 (Twice)  
 Attempts ..... 12 (9/9/22 vs. LSU)  
 Hitting % .. 1.000 [1-0-1] (10/7/22 vs. CSU)  
 Blocks ..... 4 (Twice)  
 Digs ..... 4 (10/8/22 vs. OAK)  
 Aces ..... same  
 Assists ..... 1 (Twice)

**4 Josie Johnson | So. | S****2023 Season Highs**

Kills ..... 2 (Twice)  
 Attempts .... 5 (9/30 at Youngstown State)  
 Hitting % .. 1.000 [2-0-2] (10/13 at Oakland)  
 Blocks ..... n/a  
 Digs ..... 16 (9/15 vs. Air Force)  
 Aces ..... 3 (10/6 vs. Northern Ky.)  
 Assists ..... 32 (9/8 vs. Western Illinois)

**Career Highs**

Kills ..... 2 (Four Times)  
 Attempts ..... 6 (9/23/22 vs. YSU)  
 Hitting % ..... same  
 Blocks ..... 1 (Twice)  
 Digs ..... same  
 Aces ..... same  
 Assists ..... same

**9 Kati Goba | Fr. | DS****2023 Season Highs**

Kills ..... n/a  
 Attempts ..... n/a  
 Hitting % ..... n/a  
 Blocks ..... 1 (9/1 vs. Mont. St.)  
 Digs ..... 12 (9/2 vs. St. Thomas)  
 Aces ..... 1 (9/30 at Youngstown State)  
 Assists ..... 2 (9/29 at Robert Morris)

**Career Highs**

Kills ..... n/a  
 Attempts ..... n/a  
 Hitting % ..... n/a  
 Blocks ..... same  
 Digs ..... same  
 Aces ..... same  
 Assists ..... same

**2 Bri Geurts | Jr. | RS/MB****2023 Season Highs**

Kills ..... 15 (9/8 vs. Western Illinois)  
 Attempts ..... 27 (9/14 vs. Marquette)  
 Hitting % . .750 [3-0-4] (8/25 vs. Villanova)  
 Blocks ..... 5 (10/20 at Purdue Fort Wayne)  
 Digs ..... 4 (10/21 at IUPUI)  
 Aces ..... n/a  
 Assists ..... 2 (9/4 vs. Northwestern)

**Career Highs**

Kills ..... same  
 Attempts 30 (9/17/22 vs. New Mexico St.)  
 Hitting % ..... .750 [3-0-4] (Twice)  
 Blocks ..... 9 (10/8/22 vs. Oakland)  
 Digs ..... 6 (9/2/22 vs. Utah)  
 Aces ..... 2 (Five Times)  
 Assists ..... 3 (Twice)

**6 Ari Miller | Gr. | MB****2023 Season Highs**

Kills ..... 19 (Twice)  
 Attempts ..... 41 (9/8 vs. Western Illinois)  
 Hitting % ..... .650 [13-0-20] (9/23 vs. PFW)  
 Blocks ..... 8 (Three Times)  
 Digs ..... 8 (10/6 vs. Northern Ky.)  
 Aces ..... 3 (9/30 at Youngstown State)  
 Assists ..... 1 (10 Times)

**Career Highs**

Kills ..... 30 (9/17/21 vs. West. Michigan)  
 Attempts 50 (9/17/21 vs. West. Michigan)  
 Hitting % . .688 [11-0-16] (9/24/22 vs. RM)  
 Blocks ..... 10 (10/13/19 at Oakland)  
 Digs ..... same  
 Aces ..... 3 (Four Times)  
 Assists ..... 2 (Five Times)

**10 Czhen Beneby | So. | MB****2023 Season Highs**

Kills ..... 10 (10/6 vs. Northern Ky.)  
 Attempts ..... 20 (Twice)  
 Hitting % ..... .636 [7-0-11] (9/14 vs. Marq.)  
 Blocks ..... 6 (9/19 at Chicago State)  
 Digs ..... 4 (Twice)  
 Aces ..... n/a  
 Assists ..... 1 (9/8 vs. Idaho)

**Career Highs**

Kills ..... 15 (11/1/22 vs. PFW)  
 Attempts ..... 26 (11/5/22 at CSU)  
 Hitting % .. .800 [8-0-10] (9/23/22 vs. YSU)  
 Blocks ..... 6 (Four Times)  
 Digs ..... 5 (10/22 at YSU)  
 Aces ..... same  
 Assists ..... 1 (Four Times)

**3 Lakyn Graves | Jr. | MB****2023 Season Highs**

Kills ..... 11 (9/30 at Youngstown State)  
 Attempts .. 20 (10/20 at Purdue Fort Wayne)  
 Hitting % ..... .625 [5-0-8] (9/12 vs. DePaul)  
 Blocks ..... 7 (Three Times)  
 Digs ..... 6 (8/25 at West. Michigan)  
 Aces ..... 2 (8/26 vs. Villanova)  
 Assists ..... 1 (Three Times)

**Career Highs**

Kills ..... same  
 Attempts ..... 30 (9/16/21 vs. Weber St.)  
 Hitting % ..... same  
 Blocks ..... 13 (9/3/21 vs. Arizona State)  
 Digs ..... same  
 Aces ..... same  
 Assists ..... same

**8 Kaley Blake | Sr. | S****2023 Season Highs**

Kills ..... 1 (Five Times)  
 Attempts ..... 4 (10/7 vs. Wright State)  
 Hitting % ..... 1.000 [1-0-1] (Three Times)  
 Blocks ..... n/a  
 Digs ..... 16 (Twice)  
 Aces ..... 3 (9/14 vs. Marquette)  
 Assists .. 32 (10/20 at Purdue Fort Wayne)

**Career Highs**

Kills ..... 2 (Twice)  
 Attempts ..... 6 (Twice)  
 Hitting % ..... 1.000 [2-0-2, 1-0-1] (4x)  
 Blocks ..... 1 (9/24/21 at PFW)  
 Digs ..... 17 (10/1/22 at NKU)  
 Aces ..... 4 (9/27/22 at IUPUI)  
 Assists ..... 33 (8/28/22 at Notre Dame)

**11 Natalie Schmitz | So. | OH****2023 Season Highs**

Kills ..... 17 (Three Times)  
 Attempts ..... 54 (9/8 vs. Western Illinois)  
 Hitting % ..... .450 [11-2-20] (9/2 at STM)  
 Blocks ..... 4 (Twice)  
 Digs ..... 8 (10/6 vs. Northern Ky.)  
 Aces ..... 3 (Twice)  
 Assists ..... 2 (9/12 vs. DePaul)

**Career Highs**

Kills ..... same  
 Attempts ..... same  
 Hitting % . .471 [9-1-17] (9/20/22 vs. PFW)  
 Blocks ..... 4 (Three Times)  
 Digs ..... same  
 Aces ..... 3 (Three Times)  
 Assists ..... same



## SEASON &amp; CAREER HIGHS

**12 Bella Lipski | Fr. | MB****2023 Season Highs**

Kills .....	3 (10/21 at IUPUI)
Attempts .....	6 (10/21 at IUPUI)
Hitting % .....	.500 [1-0-2] (10/20 at PFW)
Blocks .....	5 (10/21 at IUPUI)
Digs .....	2 (10/21 at IUPUI)
Aces .....	n/a
Assists .....	n/a

**Career Highs**

Kills .....	same
Attempts .....	same
Hitting % .....	same
Blocks .....	same
Digs .....	same
Aces .....	n/a
Assists .....	n/a

**15 Sarah Schrader | Sr. | DS****2023 Season Highs**

Kills .....	1 (9/8 vs. Western Illinois)
Attempts .....	3 (8/26 vs. Villanova)
Hitting % .....	1.000 [1-0-1] (9/8 vs. W. Illinois)
Blocks .....	n/a
Digs .....	36 (9/8 vs. Western Illinois)
Aces .....	3 (Twice)
Assists .....	7 (9/15 vs. Air Force)

**Career Highs**

Kills .....	5 (11/5/22 at CSU)
Attempts .....	24 (3/22/21 at PFW)
Hitting % .....	1.000 [1-0-1] (Twice)
Blocks .....	2 (Twice)
Digs .....	same
Aces .....	4 (10/22/21 vs. IUPUI)
Assists .....	9 (8/28/22 at Notre Dame)

**13 Kara Erdmann | So. | DS****2023 Season Highs**

Kills .....	n/a
Attempts .....	1 (Three Times)
Hitting % .....	.000 [0-0-1] (Twice)
Blocks .....	n/a
Digs .....	22 (10/20 at Purdue Fort Wayne)
Aces .....	1 (Twice)
Assists .....	6 (10/13 at Oakland)

**Career Highs**

Kills .....	1 (Twice)
Attempts .....	2 (Three Times)
Hitting % .....	1.000 [1-0-1] (Twice)
Blocks .....	same
Digs .....	28 (11/18/22 vs. CSU)
Aces .....	2 (11/1/22 vs. PFW)
Assists .....	same

**16 Rachel Scott | So. | RS****2023 Season Highs**

Kills .....	9 (9/23 vs. PFW)
Attempts .....	15 (9/23 vs. PFW)
Hitting % .....	.750 [3-0-4] (9/22 vs. IUPUI)
Blocks .....	7 (9/29 at Robert Morris)
Digs .....	6 (9/29 at Robert Morris)
Aces .....	n/a
Assists .....	2 (9/8 vs. Western Illinois)

**Career Highs**

Kills .....	same
Attempts .....	same
Hitting % .....	same
Blocks .....	same
Digs .....	same
Aces .....	same
Assists .....	same

**14 Madi Malone | Jr. | OH****2023 Season Highs**

Kills .....	26 (10/20 at Purdue Fort Wayne)
Attempts .....	56 (10/20 at Purdue Fort Wayne)
Hitting % .....	.440 [12-1-25] (Twice)
Blocks .....	4 (9/1 vs. Cal. Baptist)
Digs .....	19 (9/1 vs. Mont. St.)
Aces .....	2 (Twice)
Assists .....	3 (Twice)

**Career Highs**

Kills .....	29 (10/1/21 vs. WSU)
Attempts .....	66 (10/1/21 vs. WSU)
Hitting % .....	.467 [9-2-15] (9/11/21 at C-Ark)
Blocks .....	same
Digs .....	same
Aces .....	4 (11/11/21 at RMU)
Assists .....	3 (Three Times)

**17 Mati Jakscht | Gr. | DS****2023 Season Highs**

Kills .....	1 (9/8 vs. Western Illinois)
Attempts .....	1 (Three Times)
Hitting % .....	1.000 [1-0-1] (9/8 vs. WIU)
Blocks .....	n/a
Digs .....	6 (Three Times)
Aces .....	1 (Twice)
Assists .....	2 (9/8 vs. Western Illinois)

**Career Highs**

Kills .....	2 (10/18/22 vs. IUPUI)
Attempts .....	5 (3/22/21 at PFW)
Hitting % .....	1.000 [1-0-1] (Three Times)
Blocks .....	same
Digs .....	17 (3/8/21 at NKU)
Aces .....	3 (10/18/19 vs. IUPUI)
Assists .....	12 (2/9/21 vs. GB)

## ACTIVE CAREER LEADERS

**Matches Played**

Ari Miller	127
Mati Jakscht	90
Kaley Blake	88

**Consecutive Matches Played**

Madi Malone	86
Three Players Tied	52
<i>(Blake, Johnson, Schmitz)</i>	

**Sets Played**

Ari Miller	469
Madi Malone	318
Kaley Blake	314

**Kills**

Ari Miller	1,469
Madi Malone	991
Natalie Schmitz	542

**Double-Figure Kills**

Ari Miller	86
Madi Malone	59
Natalie Schmitz	29

**Digs**

Sarah Schrader	882
Madi Malone	813
Kaley Blake	615

**Double-Figure Digs**

Sarah Schrader	43
Madi Malone	42
Kaley Blake	21

**Total Blocks**

Ari Miller	426
Bri Guerts	163
Czhen Beneby	135

**Assists**

Kaley Blake	1,613
Josie Johnson	993
Sarah Schrader	151

**Double-Doubles**

Madi Malone	31
Kaley Blake	22
Josie Johnson	6

**Service Aces**

Sarah Schrader	71
Kaley Blake	57
Ari Miller	56
Madi Malone	48

## MILWAUKEE MATCH-BY-MATCH



### 2023-24 Milwaukee Women's Volleyball Team Match-by-Match All games

			Attack				Set			Serve				Recept				Blocking						
Date	Opponent	SP	K	E	TA	PCT	A	TA	PCT	SA	SE	TA	PCT	RE	TA	PCT	DIG	BS	BA	BE	TOTAL	BHE	POINTS	SCORE
08/25/2023	at Western Mich.	4	37	21	125	.128	35	119	.294	2	12	73	.836	7	86	.919	43	7	12	0	13.0	3	52.0	1-3
08/26/2023	vs UNI	3	29	13	101	.158	26	94	.277	4	8	67	.881	5	65	.923	33	4	10	2	9.0	0	42.0	0-3
08/26/2023	vs Villanova	5	65	20	155	.290	60	148	.405	6	5	111	.955	8	92	.913	61	1	10	2	6.0	3	77.0	2-3
09/01/2023	vs California Baptist	4	45	29	158	.101	44	166	.265	2	4	80	.950	4	91	.956	64	4	12	1	10.0	4	57.0	1-3
09/01/2023	vs Montana St.	4	62	18	140	.314	60	144	.417	1	3	97	.969	13	81	.840	69	1	20	0	11.0	0	74.0	3-1
09/02/2023	at St. Thomas (MN)	3	49	13	112	.321	45	113	.398	1	6	74	.919	1	46	.978	58	1	16	2	9.0	1	59.0	3-0
09/04/2023	Northwestern	4	52	21	137	.226	47	136	.346	5	3	88	.966	8	87	.908	50	3	10	5	8.0	0	65.0	3-1
09/08/2023	vs Idaho	3	45	6	85	.459	38	79	.481	3	3	74	.959	6	43	.860	38	3	10	2	8.0	0	56.0	3-0
09/08/2023	vs Western Ill.	5	71	23	193	.249	66	194	.340	5	5	111	.955	6	94	.936	93	2	18	4	11.0	0	87.0	3-2
09/09/2023	at SIUE	4	50	16	138	.246	48	139	.345	5	6	86	.930	6	84	.929	58	0	10	0	5.0	1	60.0	1-3
09/12/2023	DePaul	3	45	17	117	.239	44	113	.389	5	2	73	.973	2	57	.965	44	4	12	2	10.0	1	60.0	3-0
09/14/2023	Marquette	4	48	16	137	.234	45	145	.310	5	7	75	.907	8	89	.910	62	0	8	2	4.0	1	57.0	1-3
09/15/2023	Air Force	5	69	25	181	.243	65	187	.348	9	12	106	.887	3	93	.968	81	3	8	1	7.0	0	85.0	3-2
09/19/2023	at Chicago St.	5	46	20	136	.191	41	134	.306	8	11	96	.885	10	92	.891	42	2	24	4	14.0	1	68.0	3-2
09/22/2023	IUPUI	3	30	12	76	.237	26	67	.388	5	2	73	.973	5	39	.872	34	2	24	0	14.0	0	49.0	3-0
09/23/2023	Purdue Fort Wayne	3	47	8	99	.394	42	97	.433	8	7	73	.904	2	46	.957	53	0	14	0	7.0	1	62.0	3-0
09/29/2023	at Robert Morris	4	54	19	134	.261	51	131	.389	5	5	99	.949	5	65	.923	74	2	24	4	14.0	0	73.0	3-1
09/30/2023	at Youngstown St.	4	56	23	132	.250	53	126	.421	9	2	95	.979	4	75	.947	50	2	10	2	7.0	1	72.0	3-1
10/03/2023	Green Bay	4	51	25	140	.186	48	146	.329	7	6	78	.923	8	92	.913	55	0	16	3	8.0	4	66.0	1-3
10/06/2023	Northern Ky.	4	57	20	156	.237	53	159	.333	8	10	98	.898	6	82	.927	78	2	18	2	11.0	0	76.0	3-1
10/07/2023	Wright St.	4	54	13	151	.272	52	153	.340	6	7	89	.921	6	80	.925	71	1	20	1	11.0	2	71.0	3-1
10/13/2023	at Oakland	3	40	10	84	.357	38	85	.447	4	4	73	.945	1	37	.973	40	2	12	0	8.0	1	52.0	3-0
10/14/2023	at Cleveland St.	3	38	21	118	.144	31	110	.282	2	5	67	.925	2	62	.968	36	0	6	3	3.0	0	43.0	0-3
10/20/2023	at Purdue Fort Wayne	5	61	24	167	.222	59	173	.341	2	3	111	.973	9	89	.899	82	4	16	1	12.0	1	75.0	3-2
10/21/2023	at IUPUI	4	50	13	124	.298	46	124	.371	8	8	92	.913	5	73	.932	39	1	16	2	9.0	1	67.0	3-1
Totals		97	1251	446	3296	.244	1163	3282	.354	125	146	2159	.932	140	1840	.924	1408	51	356	45	229.0	26	1605.0	
Opponents		97	1215	571	3441	.187	1152	3454	.334	140	173	2013	.914	125	2013	.938	1390	25	335	28	192.5	18	1547.5	

## Team Averages

Sets Played	Kills per set	Assists per set	Service aces per set	Digs per set	Blocks per set	Points per set	Ball handling error per set	Reception errors per set
97	12.90	11.99	1.29	14.52	2.36	16.55	0.27	1.44

# OPPONENT MATCH-BY-MATCH



## 2023-24 Milwaukee Women's Volleyball Opponents Match-by-Match All games

			Attack				Set			Serve				Recept				Blocking						
Date	Opponent	SP	K	E	TA	PCT	A	TA	PCT	SA	SE	TA	PCT	RE	TA	PCT	DIG	BS	BA	BE	TOTAL	BHE	POINTS	SCORE
08/25/2023	at Western Mich.	4	53	24	129	.225	50	125	.400	7	9	95	.905	2	61	.967	60	2	8	1	6.0	0	66.0	1-3
08/26/2023	vsUNI	3	49	21	111	.252	47	108	.435	5	8	73	.890	4	59	.932	51	0	14	0	7.0	1	61.0	0-3
08/26/2023	vsVillanova	5	70	22	165	.291	67	163	.411	8	14	106	.868	6	106	.943	59	1	16	1	9.0	1	87.0	2-3
09/01/2023	vsCalifornia Baptist	4	56	22	148	.230	55	154	.357	4	6	97	.938	2	76	.974	69	2	18	1	11.0	2	71.0	1-3
09/01/2023	vsMontana St.	4	52	27	158	.158	47	164	.287	13	7	88	.920	1	94	.989	55	1	14	2	8.0	0	73.0	3-1
09/02/2023	at St. Thomas (MN)	3	29	19	123	.081	29	130	.223	1	6	52	.885	1	68	.985	47	0	12	0	6.0	0	36.0	3-0
09/04/2023	Northwestern	4	56	24	143	.224	52	137	.380	8	7	94	.926	5	85	.941	51	1	23	1	12.5	0	76.5	3-1
09/08/2023	vsIdaho	3	26	21	89	.056	24	95	.253	6	1	44	.977	3	71	.958	30	0	4	3	2.0	0	34.0	3-0
09/08/2023	vsWestern Ill.	5	61	24	191	.194	56	191	.293	6	5	99	.949	5	106	.953	83	0	12	4	6.0	0	73.0	3-2
09/09/2023	at SIUE	4	60	22	150	.253	56	149	.376	6	6	90	.933	5	80	.938	65	1	18	0	10.0	1	76.0	1-3
09/12/2023	DePaul	3	34	19	104	.144	32	113	.283	2	2	59	.966	5	71	.930	48	1	14	2	8.0	2	44.0	3-0
09/14/2023	Marquette	4	56	19	147	.252	55	143	.385	8	2	91	.978	5	68	.926	67	1	12	0	7.0	0	71.0	1-3
09/15/2023	Air Force	5	61	19	170	.247	60	175	.343	3	9	102	.912	9	94	.904	77	2	18	2	11.0	0	75.0	3-2
09/19/2023	at Chicago St.	5	61	30	144	.215	59	140	.421	10	12	104	.885	8	85	.906	57	2	14	1	9.0	1	80.0	3-2
09/22/2023	IUPUI	3	27	29	100	-.020	25	98	.255	5	9	48	.813	5	71	.930	29	0	10	0	5.0	1	37.0	3-0
09/23/2023	Purdue Fort Wayne	3	28	17	106	.104	25	108	.231	2	2	48	.958	8	66	.879	41	0	8	2	4.0	0	34.0	3-0
09/29/2023	at Robert Morris	4	42	30	157	.076	38	154	.247	5	8	73	.890	5	94	.947	56	0	16	2	8.0	1	55.0	3-1
09/30/2023	at Youngstown St.	4	52	23	136	.213	49	130	.377	4	8	83	.904	9	93	.903	45	0	16	2	8.0	0	64.0	3-1
10/03/2023	Green Bay	4	52	16	129	.279	48	123	.390	8	3	95	.968	7	72	.903	57	3	12	1	9.0	0	69.0	1-3
10/06/2023	Northern Ky.	4	47	26	160	.131	45	170	.265	6	4	86	.953	8	88	.909	72	0	24	1	12.0	3	65.0	3-1
10/07/2023	Wright St.	4	55	25	161	.186	52	155	.335	6	5	85	.941	6	82	.927	72	2	6	0	5.0	0	66.0	3-1
10/13/2023	at Oakland	3	23	21	94	.021	23	103	.223	1	4	41	.902	4	69	.942	28	0	4	0	2.0	5	26.0	3-0
10/14/2023	at Cleveland St.	3	46	12	98	.347	44	97	.454	2	13	75	.827	2	62	.968	52	3	12	1	9.0	0	57.0	0-3
10/20/2023	at Purdue Fort Wayne	5	67	32	198	.177	65	196	.332	9	15	104	.856	2	108	.981	69	2	16	1	10.0	0	86.0	3-2
10/21/2023	at IUPUI	4	52	27	130	.192	49	133	.368	5	8	81	.901	8	84	.905	50	1	14	0	8.0	0	65.0	3-1
Opponent totals		97	1215	571	3441	.187	1152	3454	.334	140	173	2013	.914	125	2013	.938	1390	25	335	28	192.5	18	1547.5	
Milwaukee totals		97	1251	446	3296	.244	1163	3282	.354	125	146	2159	.932	140	1840	.924	1408	51	356	45	229.0	26	1605.0	

### Team Averages

Sets Played	Kills per set	Assists per set	Service aces per set	Digs per set	Blocks per set	Points per set	Ball handling error per set	Reception errors per set
97	12.53	11.88	1.44	14.33	1.98	15.95	0.19	1.29